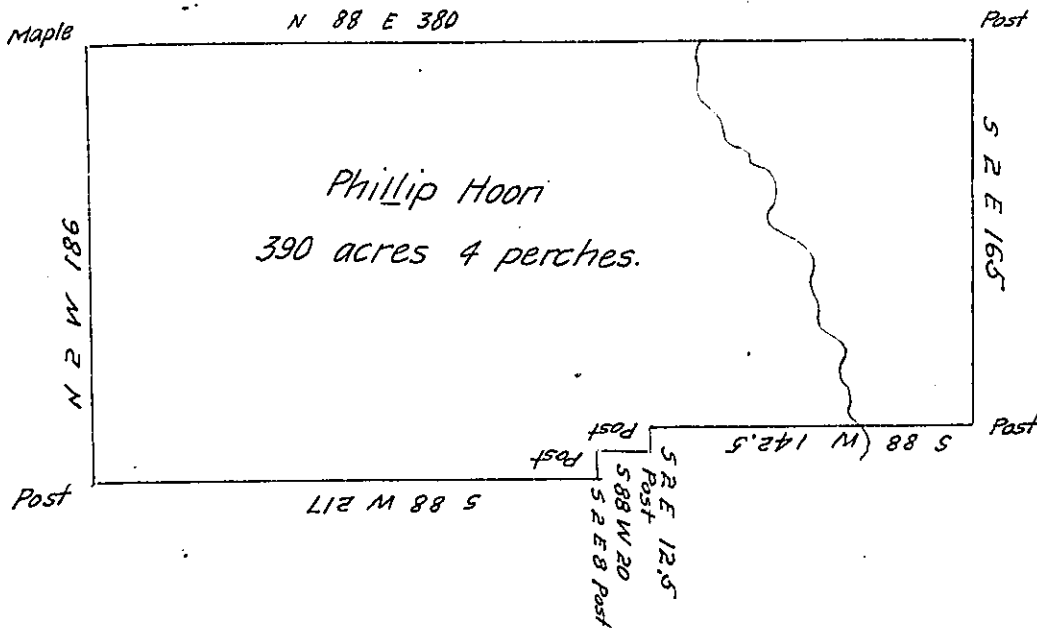


C 180-229

C 134-289

Scale 100 Perches to an inch.

The Heirs of John Ritchey



John Sutherlen and Perry

D-2984

A. Thompson Part of Alexanders

The Heirs of A. Quillen.

Situate in Wolf Creek Township Mercer County Containing
 390 acres 4 perches and allowance Surveyed December 29th 1836
 for Phillip Hoon, in persuant of his actual Settlement made in 1797
 march 21st 1837.

B. Alexander D.S.

John Taylor Esq^r

S. G.

IN TESTIMONY that the above is a copy of the original remaining on file in
 the Department of Internal Affairs of Pennsylvania, made
 conformably to an Act of Assembly approved the 16th day of
 February, 1833, I have hereunto set my Hand and caused
 the Seal of said Department to be affixed at Harrisburg,
 this third day of May 1905

James D. Rowley
 Secretary of Internal Affairs.